

FUSION

Printed fabrics

1.0



AUSTEX
FABRICS

OVERVIEW



Welcome to a new world of design possibilities...

Be inspired by Austex Fusion, custom printed fabrics... where form meets function and design is more than decoration.

Fusion has been designed with high performance in mind especially for commercial interiors. Using the latest technology in waterproof polyester base fabrics, Fusion guards against spills and stains and is totally anti-microbial. All Fusion prints are bleach cleanable and fire retardant making them the perfect choice for hospital or aged care environments.

Designed to make an impression, the options are endless with Fusion's extensive range of designs and coordinates.



The colours and scale shown in this brochure may not be a true representation of the actual product and must be viewed as a guide only.

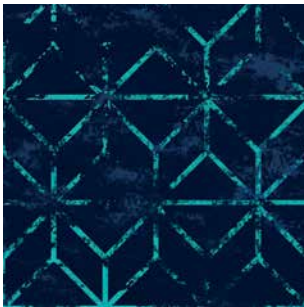
GRID

Featured: Navy

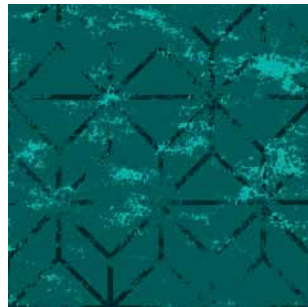




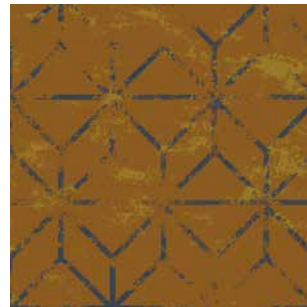
Sandshell — Printed on Weave base cloth.



Navy



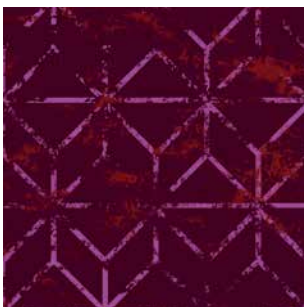
Aqua



Mustard Gold



Terracotta



Garnet



Quarry



Grey Salmon

Grid Pattern Repeat – V:23.5cm H:22cm

BLOSSOM

Featured: Camillia

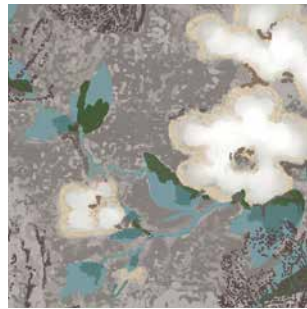




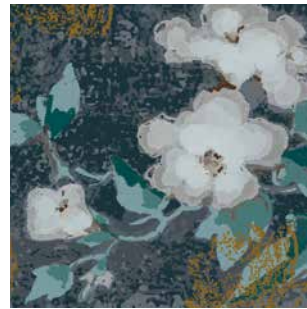
Dandelion



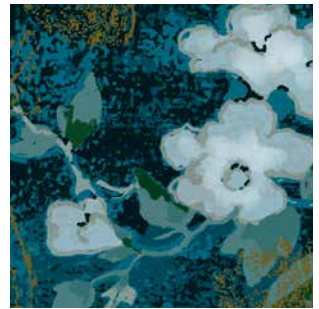
Carnation



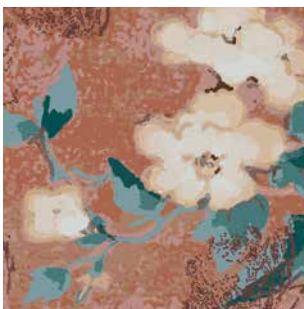
Camillia



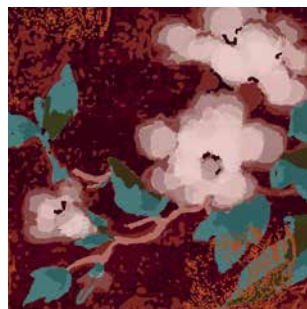
Silver Birch



Forget-me-not



Peach



Rose

Blossom Pattern Repeat – V:51cm H:94cm

LEAF

Featured: Feather Grey

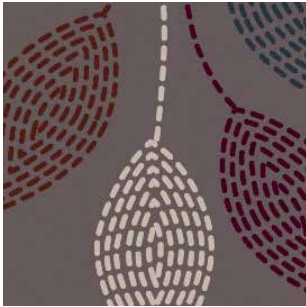




Humus



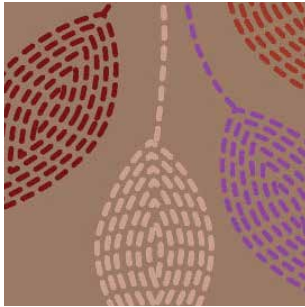
Oak



Cinder



Garnet



Semolina



Taupe



Ashwood



Yarrow



Feather Grey



Turquoise



Blue Bell

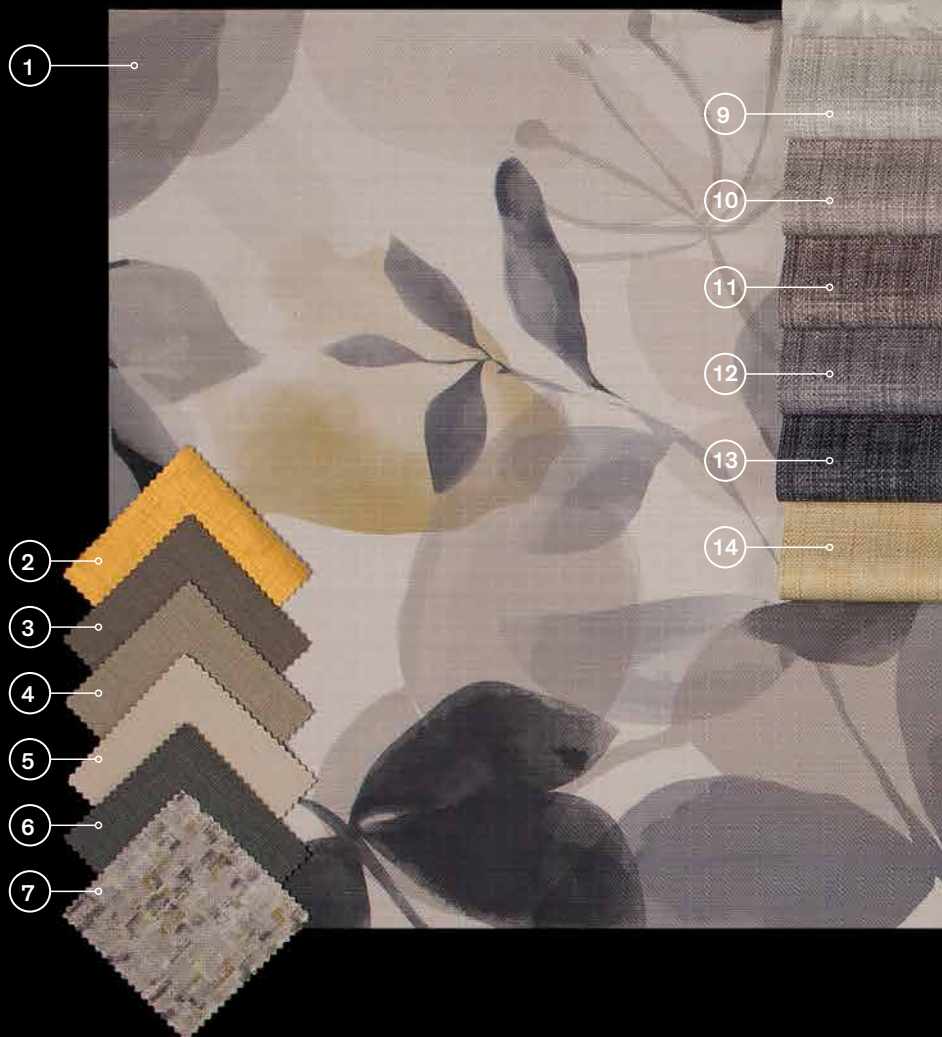


Palace Blue

Leaf Pattern Repeat – V:24cm H:24cm

INSPIRATIONS

1. **Watermark** – Raffia
2. **Gem** – Citrine (vinyl)
3. **Tessuto** – Asino (vinyl)
4. **Tessuto** – Sabbia (vinyl)
5. **Tessuto** – Gesso (vinyl)



6. **Tessuto** – Chielo (vinyl)
7. **Jackson** – Beige
8. **Brocade** – Gardenia
9. **Tweed** – Seafoam
10. **Tweed** – Wicker
11. **Tweed** – Sandstorm





15

- 12. Tweed – Pigeon
- 13. Tweed – Armour
- 14. Tweed – Zest
- 15. Brocade – Stone
- 16. Gem – Crystal (vinyl)
- 17. Grid – Sandshell
- 18. Orbit – Beige

16

17

18

19

20

21

22



23

- 19. Pellan Ultimate – Bamboo (vinyl)
- 20. Pellan Ultimate – Cement (vinyl)
- 21. Pellan Ultimate – Putty (vinyl)
- 22. Pellan Ultimate – Vienna (vinyl)
- 23. Blossom – Carnation

JACKSON

Featured: Petrol

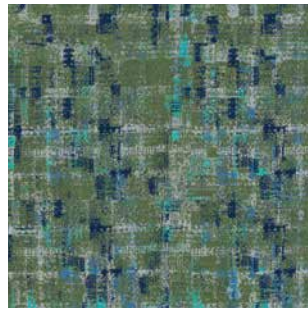




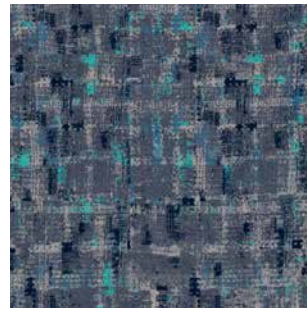
Navy



Petrol



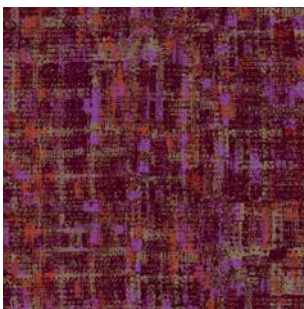
Green



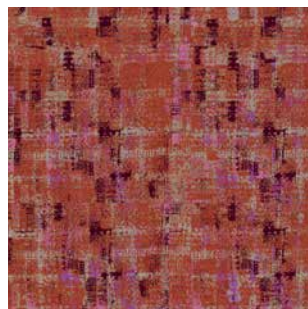
Charcoal



Platinum



Burgundy



Orange



Pepper



Beige

Jackson Pattern Repeat – V:40cm H:52.2cm

HEXAGON

Featured: Titanium





Titanium



Celestial



Cobblestone



Garnet



Rust

Hexagon Pattern Repeat – V:18cm H:35.6cm

OLIVE

Featured: Peacock





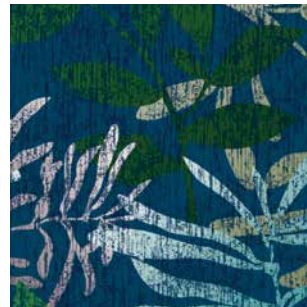
Semolina



Imperial



After Dark



Cobalt



Trellis



Peacock



Angora



Oatmeal

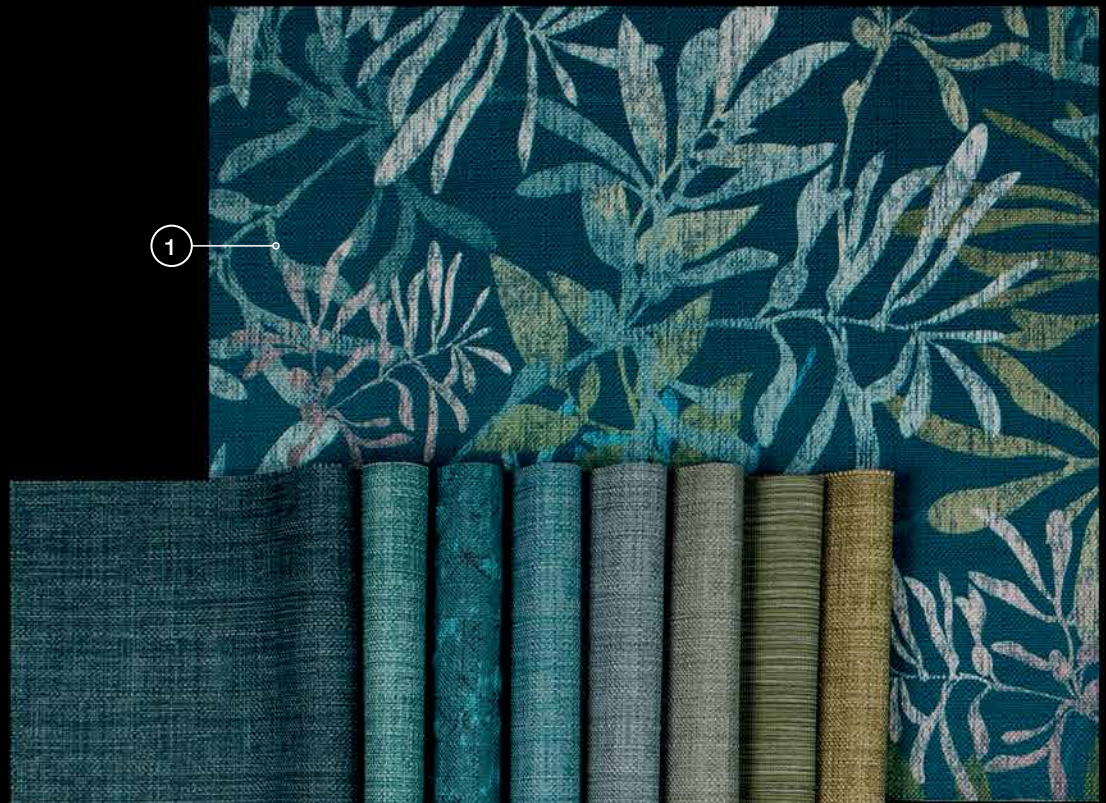


Russett

Olive Pattern Repeat – V:70cm H:70cm

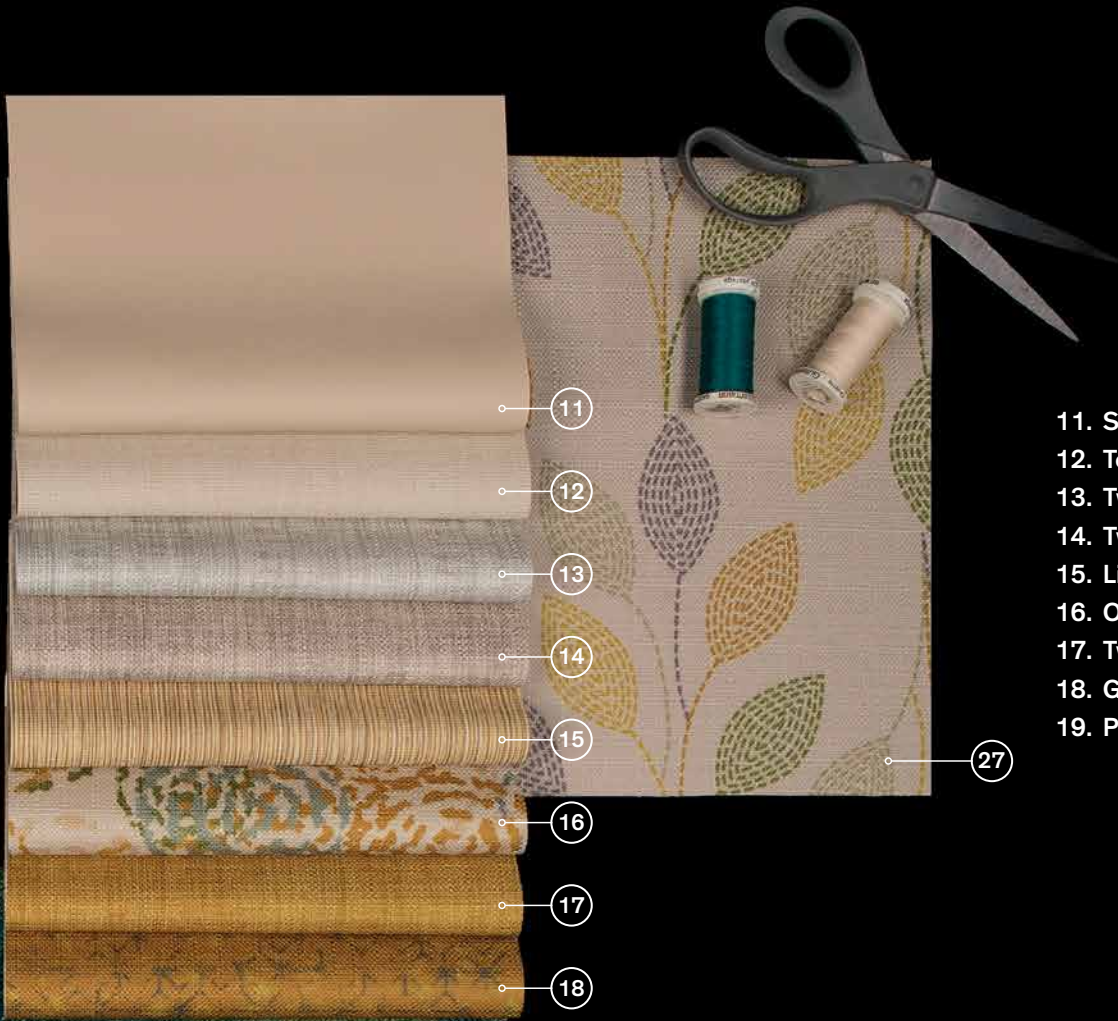
INSPIRATIONS

1. **Olive** – Peacock
2. **Tweed** – Seaweed
3. **Tweed** – Spearmint
4. **Grid** – Aqua

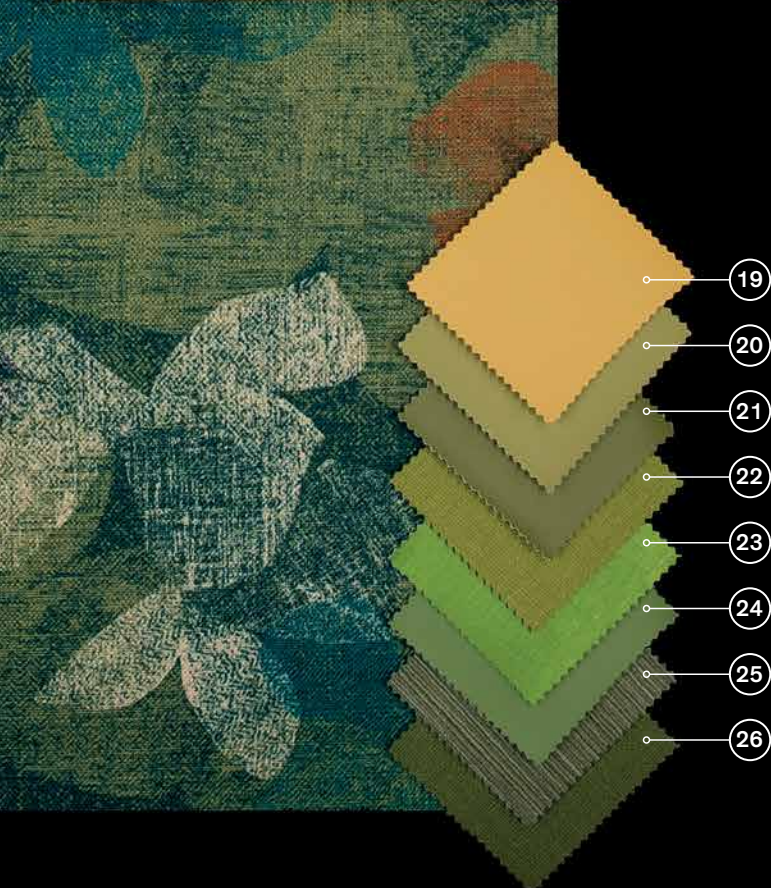


5. **Tweed** – Capri
6. **Tweed** – Lakehouse
7. **Tweed** – Sage
8. **Linea** – Landline (vinyl)
9. **Tweed** – Sweetpea
10. **Lilypad** – Swamp





- 11. **Studio Encore** – Chalk (vinyl)
- 12. **Tessuto** – Gesso (vinyl)
- 13. **Tweed** – Sesame
- 14. **Tweed** – Haystack
- 15. **Linea** – Coastline (vinyl)
- 16. **Orbit** – Cream
- 17. **Tweed** – Mustard
- 18. **Grid** – Mustard Gold
- 19. **Pellan Ultimate** – Bamboo (vinyl)

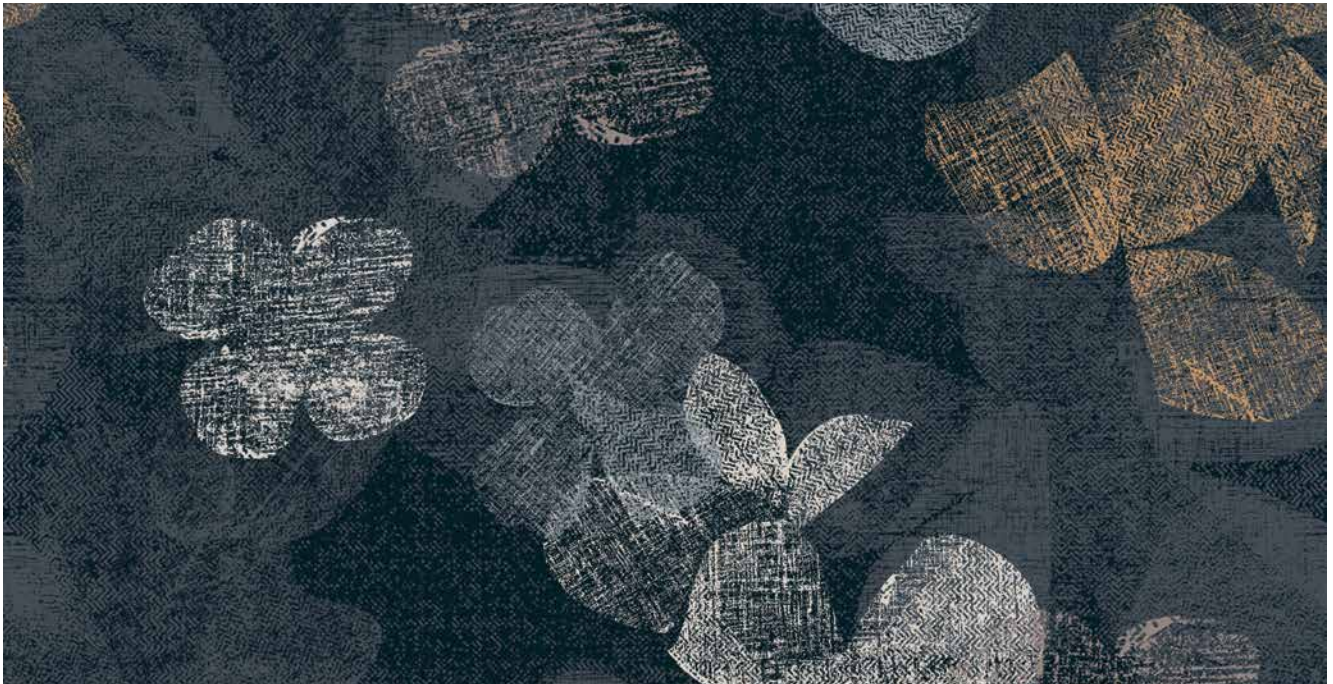


- 20. **Studio Encore** – Citronelle (vinyl)
- 21. **Plush** – Turtle Green (vinyl)
- 22. **Tessuto** – Verde (vinyl)
- 23. **Gem** – Emerald (vinyl)
- 24. **Studio Encore** – Grasshopper (vinyl)
- 25. **Linea** – Landline (vinyl)
- 26. **Tessuto** – Olive (vinyl)
- 27. **Leaf** – Yarrow

LILYPAD

Featured: Dark Shadow

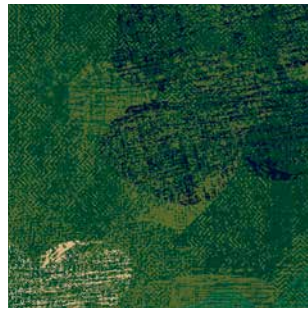




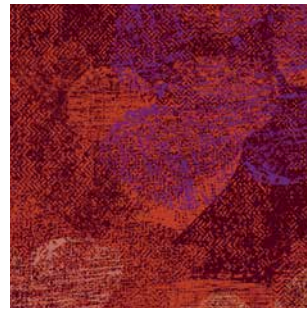
Dark Shadow



Aura



Swamp



Tigerlilly

Lilypad Pattern Repeat – V:70cm H:70cm

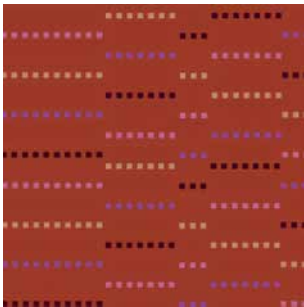
PUNCHCARD

Featured Couch: Charcoal
Featured Pillow: Turquoise

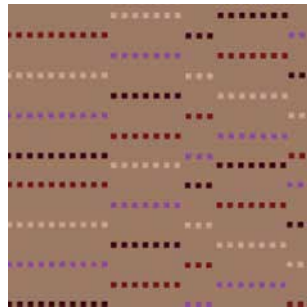




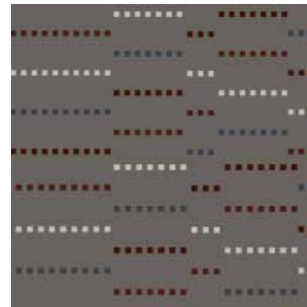
Burgundy



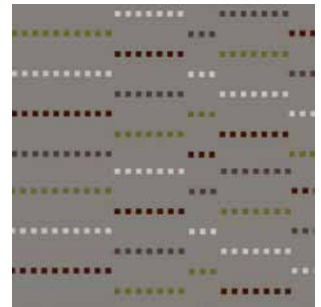
Orange



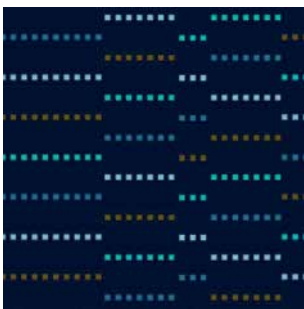
Beige



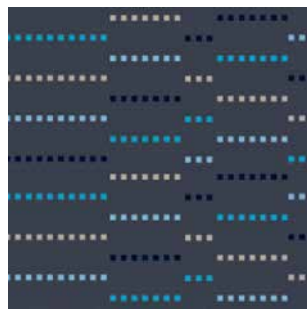
Concrete



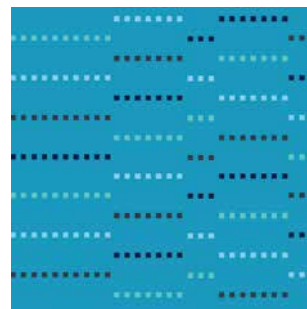
Sepia



Navy



Charcoal



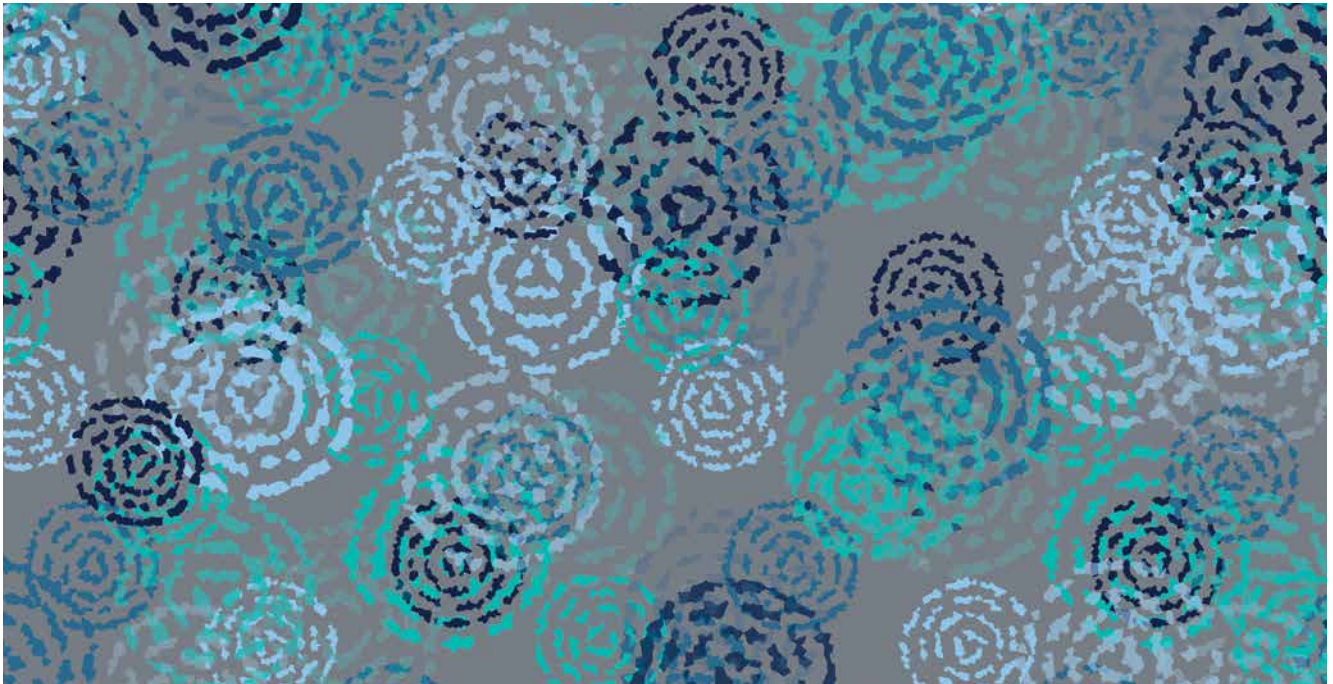
Turquoise

Punchcard Pattern Repeat – V:5cm H:20.5cm

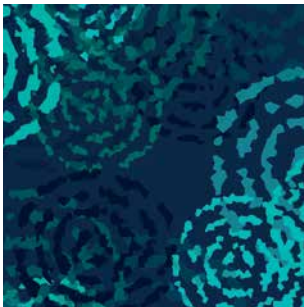
ORBIT

Featured: Navy

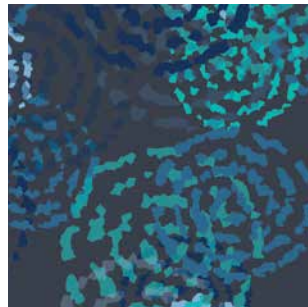




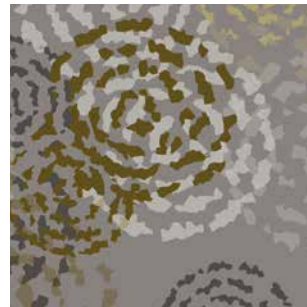
Grey



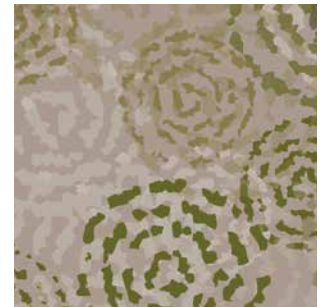
Navy



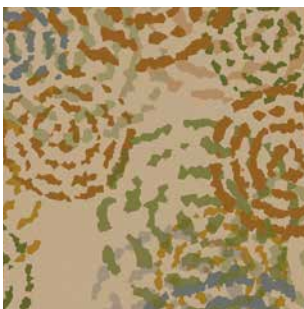
Charcoal



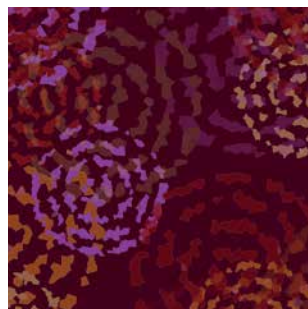
Silver



Beige



Cream



Burgundy

Orbit Pattern Repeat – V:64cm H:64cm

INSPIRATIONS

1. **Lilypad** – Tigerlilly
2. **Studio Encore** – Primrose (vinyl)
3. **Studio Encore** – Lipstick (vinyl)
4. **Metalica** – Haute Red (vinyl)
5. **Tessuto** – Salsa (vinyl)
6. **Pellan Ultimate** – Mars Red (vinyl)

1

2

3

4

5

6

7

8

9

10

11

12

7. **Soho Allure** – Terracotta (vinyl)
8. **Studio Encore** – Tangerine (vinyl)
9. **Studio Encore** – Sorbet (vinyl)
10. **Tessuto** – Mandarin (vinyl)
11. **Gem** – Fire Opal (vinyl)
12. **Orbit** – Burgundy

13

14

15

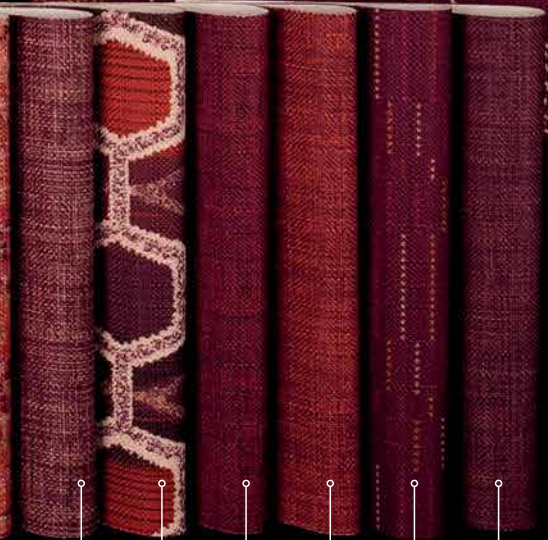


- 28
- 27
- 26
- 25
- 24
- 23



22

- 13. Tweed – Uluru
- 14. Hexagon – Rust
- 15. Jackson – Orange
- 16. Tweed – Rose
- 17. Hexagon – Garnet
- 18. Tweed – Pompei
- 19. Tweed – Tango
- 20. Punchcard – Burgundy
- 21. Tweed – Merlot
- 22. Leaf – Garnet
- 23. Grid – Garnet
- 24. Jackson – Burgundy
- 25. Tweed – Viola
- 26. Grid – Terracotta
- 27. Punchcard – Orange
- 28. Leaf – Yarrow



- 16
- 17
- 18
- 19
- 20
- 21

BROCADE

Featured: Monument





Gardenia



Blue Shadow



Chestnut



Claret



Dark Slate



Powder Puff



Stone



Vintage



Monument

Brocade Pattern Repeat – V:90cm H:64cm

WATERMARK

Featured Left: Raffia
Featured Right: Lagoon





Ashwood



Misty Jade



Moss



Rouge



Raffia



Lagoon

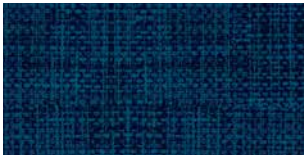
Watermark Pattern Repeat – V:70cm H:70cm

TWEED

Featured Couch: Tweed— Armour

Featured Pillow: Hexagon — Titanium

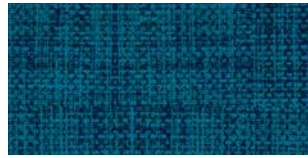




Cruise



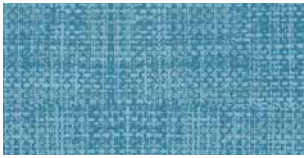
Indigo



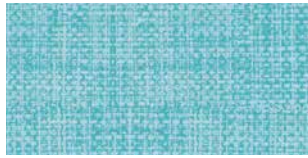
French Blue



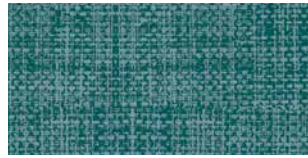
Denim



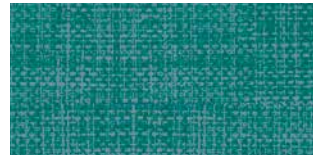
Coolwater



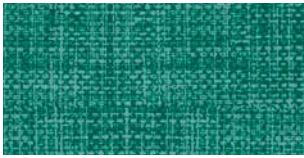
Duckegg Blue



Lakehouse



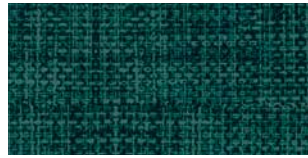
Capri



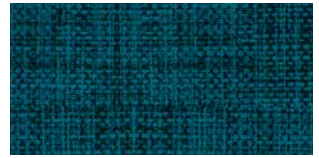
Spearmint



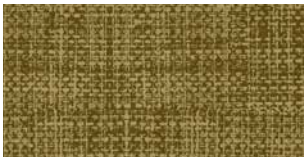
Sage



Seaweed



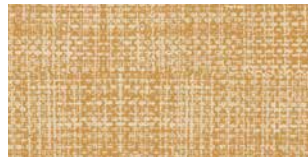
Teal



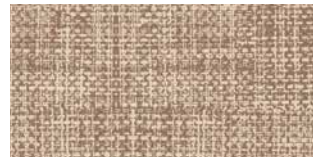
Sweet Pea



Mustard



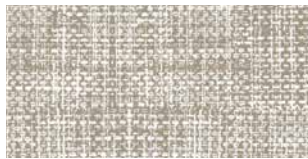
Zest



Haystack



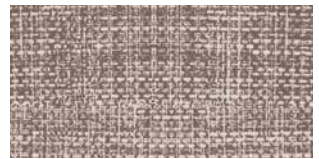
Lama



Seafoam



Seaseme



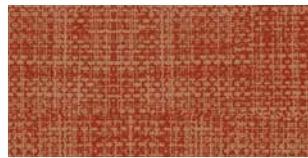
Wicker



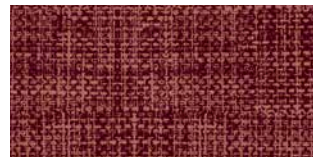
Sandstorm



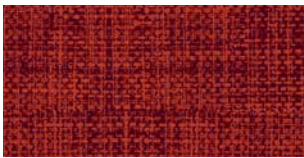
Nudie



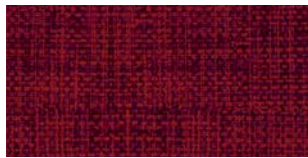
Uluru



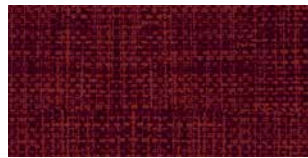
Rosewater



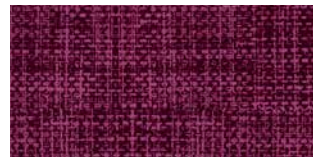
Tango



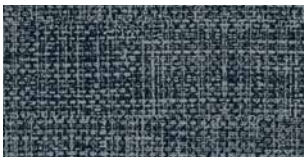
Pompei



Merlot



Viola



Armour



Pigeon

Tweed Pattern Repeat – Directional

SPECIFICATIONS

Composition	90% Polyester 10% Polyurethane	
Fabric Weight	Weave 395gsm	
Fabric width	154cm	
Printed width	140cm to 142cm	
Base fabric design	Weave (other base fabrics options available, view on Austex website)	
Finishes	Surface finish – Stain repellent Fluorocarbon C6 technology. Kinder to the environment – PFOA/PFOS free. Back coating (Waterproof) – Water based Polyurethane coating, heavy metal free	
Abrasion resistance	Test method AS 2001.2.25 (12kPa) Martindale Abrasion Method – 84,000 rubs	
F.R standards for use in commercial areas	Tested to Australian standards AS 1530.3 Spread of Flame Index : 0 Smoke Developed Index : 5 I.M.O Standards A.652 (16) AS/NZS 3837 <i>*Fire test certificates available upon request.</i>	
Anti-bacterial	Treated for bacterial protection resistant to bacteria growth – AATCC 100-2102	
Bleach cleanable	Tested to Australian standards AS 2001.4.11 Class 4-5 – No change of colour Acceptable bleach cleaning – 1 part bleach 10 parts water & rinse thoroughly. High concentration of bleach or long term exposure to bleach not recommended.	
Colourfastness to light	Tested to Australian standards AS 2001.4.21-2006 Final Rating 4 Fusion is suitable for indoor use only. Protect from direct sunlight.	
Environmental	Fusion fabrics are free of potentially harmful levels of Formaldehyde, heavy metals, PFOA, PFOS, Phthalates and Phenols. Fusion fabrics can be recycled.	
Performance properties	Water Resistance Hydrostatic Head ATCC 127-2008 – 120cms Tear strength ASTM D2261-1 (Tongue Single Rip) – Length 180N Width 418 N Tensile strength ASTM D5034-2009 (Grab Method) – Mean breaking force 2000 N Seam slippage ASTM D4034-92 No seam slippage Warp 228N, Weft 223N Pilling resistance ASTM D3511-2005 – No pilling <i>*Test certificates available upon request.</i>	
Stain resistance - ISO 105 A03	Water Based Removal of -	After 24 hours
	Blood (Artificial)	5
	Urine (Artificial)	5
	Betadine	5
	Iodine	5
	Tomato sauce	5
	Sun tan Lotion	4-5
	<ul style="list-style-type: none"> • Class 5 – complete removal • Class 4 – Good removal • Class 1 – No removal 	
Usage	Waterproof upholstery fabrics, suitable for Heavy Commercial and Healthcare applications.	
Care & maintenance	<p>Regular maintenance – Vacuum fabric regularly to remove crumbs, dust and dirt to avoid build up.</p> <p>Spills – Soak up spills as quickly as possible using dry absorbent cloth.</p> <p>Stains – Most stains can be cleaned using a damp cloth. For persistent stains use a warm soapy water solution. Moderate scrubbing with a soft bristle brush and soapy solution will help loosen soiling from the fabric surface. It is very important to remove all soap residue with clean water. Fusion can also be cleaned with a bleach solution (1 part bleach 10 parts water) rinse all residue. Do not use solvent based cleaners. Failure to follow cleaning instructions may permanently stain and reduce the life of the fabric.</p>	

For further cleaning information, please contact Austex fabrics for a product cleaning guide



FIRE
RETARDANT



WATERPROOF



ANTI
BACTERIAL



BLEACH
CLEANABLE



STAIN RESISTANT



ENVIRONMENTALLY
FRIENDLY



INDOOR



All Austex products are designed and manufactured in accordance with the quality assurance system ISO 9001.

**FOR SALES
ORDER
ENQUIRIES
CONTACT**

**T 1300 36 18 36
F 1300 36 02 36
sales@wortleygroup.com.au
www.wortleygroup.com.au**

EXCLUSIVELY DISTRIBUTED BY:

WORTLEY
Furnishing in Style